

The Elms Academy

NEWSLETTER

Integrity

Ambition

Determination

19th January 2024

Welcome Messages



Dear Parents and Carers,

As the new term continues to get underway, it has been particularly gratifying that students have demonstrated such positive attitudes towards their learning and being back in classes. Attendance is a very important part of this – ensuring our young people can maximise their time in school – so thank you for everyone's support in this, including parents and families.

Already, as you will know, many of our students have been busy with exams and putting their hard work into practice. This time really is an opportunity to demonstrate The Elms Academy's values of ambition, integrity and determination – and I know staff are proud of how this is cascading through the school.

With Ms Welch now on maternity leave, I will be leading the school with the day-to-day support of Mr Lynes and the wider senior leadership team. With the strong start we've had to term already, I am pleased that students and staff have set positive foundations and we will all be working hard to ensure that this continues to build, at pace, throughout the school year.

As a reminder, I will also be hosting the next Parent Forum on Tuesday 27th February, 6-7pm, when I hope to meet with many of you.

Thank you again for your ongoing support.

Leon Wilson
Executive Principal



This week, there has been a huge amount to reflect on as we set the tone for the term ahead, with the opportunity to renew our ambitions as a school and for students to maximise both their academic and personal growth. In particular, it has been a pleasure to see students in Years 7-10 and have been tackling exams head-on, showing both diligence and excellent behaviour.

More widely across the school, in sport, KS3 students have made strides in indoor athletics competitions, and our KS4 students have been pulling their weight in strength and conditioning sessions led by the RFU. Year 8s had the chance to try their hand at rugby with a taster session, not only testing their agility, speed and hand-eye coordination, but also their teamwork.

Amongst the extra-curricular activities happening at The Elms Academy this year, a particular focus will be on the enrichment opportunities available to Years 7-9. Sessions for these will run every Monday from 3:30pm-4:30pm. This dedicated time allows our students to explore a variety of activities that contribute to their personal and academic growth.

I very much look forward to continuing to support the school in this exciting time of year. As always, Mr Wilson and I welcome any feedback so we can keep this momentum as the term progresses.

Warm regards,
Jon Lynes
Vice Principal

The Elms Academy

NEWSLETTER

Integrity

Ambition

Determination

KS3 Enrichment

We were delighted to welcome students in KS3 back to their enrichment clubs this week. Clubs take place every Monday after school from 3.30pm until 4.30pm. They cover a wide variety of interests such as British Sign Language, Arts and Crafts as well as Badminton. It is great to see so many of our brilliant students developing their skills and interests beyond the curriculum.



The Elms Academy

NEWSLETTER

Integrity

Ambition

Determination



The Elms Academy
The best in everyone™
Part of United Learning

The Elms Academy

NEWSLETTER

Integrity

Ambition

Determination

Whole School Oracy

One of our focuses this year at The Elms is to develop oracy. Oracy is the ability to express oneself fluently and grammatically in speech. We use our verbal skills all the time – talking to family and friends, managing difficult conversations, for job or university interviews, or even answering questions in class. This is part of what makes oracy such a fundamental life skill.

In the classrooms and around the academy, students have been taught to speak and listen effectively using our two acronyms SPEAK and STAR. From Year 7 right up to the Sixth Form, students are learning to project their voice and listen compassionately to one another. Students are already seeing the benefits of implementing these skills, not only for their time at school, but beyond and that these skills will set them ahead, not just in the classroom, but throughout their lives.

SPEAK

Speak in full sentences

Project your voice

Evidence your ideas

Accurate grammar

Key vocabulary



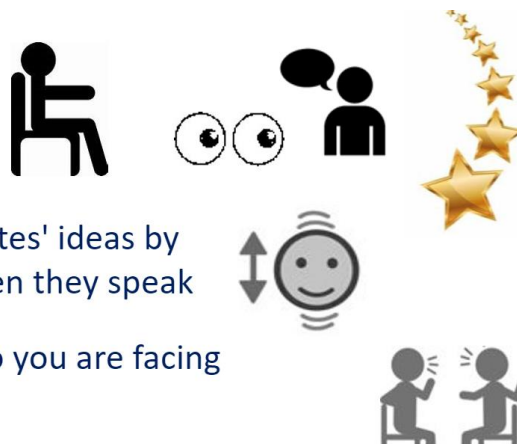
STAR

Sit up to look interested

Track the teacher

Appreciate your classmates' ideas by nodding and smiling when they speak

Re-position your body so you are facing your partner



The Elms Academy

NEWSLETTER

Integrity

Ambition

Determination

The Future World of Work

Our PSHCE topic this term is 'Dreams and Goals' and this week all year group assemblies have been focusing on the Future World of Work and exploring how students can gain knowledge of different careers. This can be through a variety of ways such as educational programmes, internships, job shadowing or conversations with professionals. We understand the importance of ensuring students are equipped with the skills and knowledge to help navigate the challenges and responsibilities they will face in the world of work.

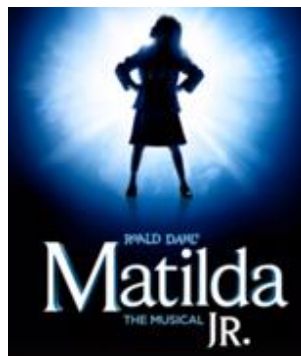


The importance of gaining knowledge about different careers.



Matilda Rehearsal Schedule

As many of you will be aware, The Elms production of “Matilda” is fast-approaching. Students who are involved in the cast are advised that rehearsals are taking place every Tuesday 3.30pm – 4.30pm and every Wednesday 3.30pm – 5.00pm. We are very excited to watch the show in February.



The Elms Academy

NEWSLETTER

Integrity

Ambition

Determination

Key Dates for Your Diary

Event	Date	Time
Exams for Year 7 – 10	Monday 22 nd January – Thursday 25 th January	All day
INSET Day	Friday 26 th January	All Day
Half Term	Monday 12 th February to Friday 16 th February	All Week
Parent Forum ONLINE	Tuesday 27 th February	6.00pm – 7.00pm
Year 7 Parent Evening	Thursday 7 th March	4.30pm – 7.00pm
Year 9 Pathways Evening	Wednesday 20 th March	4.30pm – 6.30pm
Year 8 Parent Evening	Thursday 21 st March	4.30pm – 7.00pm
Easter Holiday	Friday 29 th March – Friday 12 th April	Two weeks
INSET Day	Monday 15 th April	All Day

